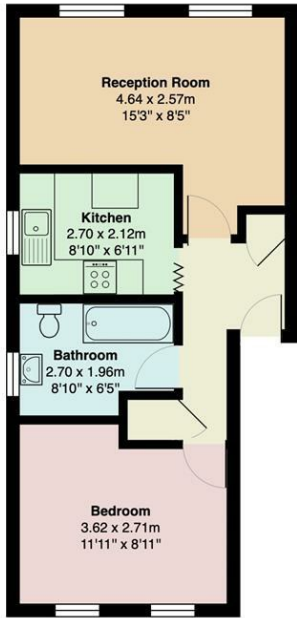


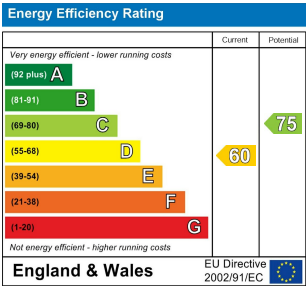
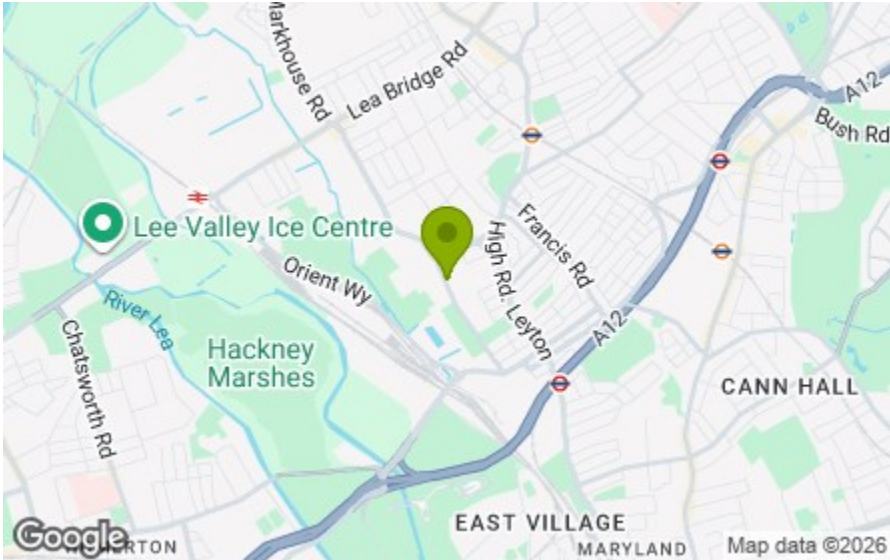
Oliver Road, E10



Second Floor

Total Area: 42.8 m² ... 460 ft²

All measurements are approximate and for display purposes only



29 OLIVER ROAD, LEYTON
£1,450 Per Calendar Month
1 Bed Flat



Features:

- Available Now
- One Bedroom
- Second Floor Apartment
- Separate Kitchen
- Conveniently Located
- Good Transport Links

A smartly finished and artfully arranged one bedroom flat on the second floor of a purpose built apartment block just moments from Leyton Jubilee Park and Coronation Gardens. The transport links of Leyton tube are also within easy reach.

Ideal for a professional couple or single, this beautifully bright apartment will be available in October.

E11, E7, E12 & E15
hello11@stowbrothers.com
0203 397 2222

E4 & N17
hello4@stowbrothers.com
0203 369 6444

E17 & E10
hello17@stowbrothers.com
0203 397 9797

E18 & IG8
hello18@stowbrothers.com
0203 369 1818

E8, E9, E5, N16, E3 & E2
hellohackney@stowbrothers.com
0208 520 3077

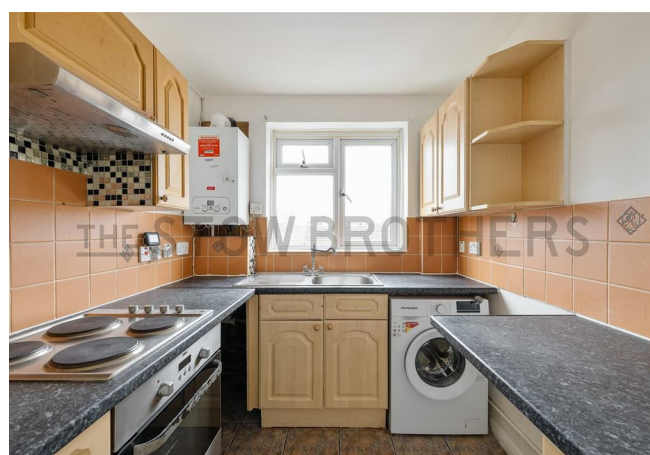
New Homes
newhomes@stowbrothers.com
0203 325 7227

Investment & Development
id@stowbrothers.com
0208 520 6220

Property Maintenance
propertymanagement@stowbrothers.com
0203 325 7228

STOWBROTHERS.COM
RSTOWBROTHERS

REQUEST A VIEWING
0203 397 9797



IF YOU LIVED HERE

Outside and, as noted, the open green spaces of Leyton Jubilee Park are just five minutes walk away. Perfect for morning jogs and evening strolls, it's also home to the courts and sports facilities of Feel Good Too Sports Centre. Just as handy is High Road Leyton, your local social hub and home to a wide range of cafes, bars and restaurants.



WHAT ELSE?

- Leyton central line station, sat in zone three, is just ten minutes away on foot and will get you directly to Liverpool Street in sixteen, putting the City less than a half hour way door to door. Great for commuters.
- Just around the corner, The Leyton Technical is well worth a visit and makes an ideal new local. Strikingly designed inside and out, the menu is just as delectable as the decor.
- If you ever want to venture further afield of a weekend, then all the endlessly explorable post-2012 legacy delights of the Queen Elizabeth Olympic Park are yours after less than half an hour's stroll.

REQUEST A VIEWING
0203 397 9797

FOLLOW US ➔ @STOWBROTHERS
STOWBROTHERS.COM